

SongList installation and import of own registrations

Installation SongList V1.4.3.....	2
Installation Information:.....	2
Language support.....	3
1. Setup.....	5
1.1 The "Set FNR" switch.....	5
1.2 The Use MIDI SysEx switch (Genos or SX only).....	6
1.3 Create a configuration with the "ADD USB" button.....	7
1.4 Enter USB stick directories.....	7
1.5 Set the required settings.....	8
1.6 Using MIDI data.....	8
1.7 Communication with the Digital Workstation.....	9
1.8 Set SongList colors.....	9
1.9 PDF/Word setup.....	9
2. Loading your own workstation data.....	9
2.1 Backup.....	9
2.2 Selecting the "SongList" configuration.....	9
2.3 USB stick, hard disk or USER Flash.....	10
2.4 Creating the default registration.....	10
2.5 Changing the contents of the default registration.....	10
2.6 Setting USB/hard disk/USER flash directories.....	11
2.7 Create or link registrations with the help of MIDI/MP3.....	12
2.8 Importing MIDI/MP3 to the registrations and memory.....	13
3. Create database.....	15
4. Check and automatically change names of registrations.....	16
5. Create Music Finder database.....	17
6. PDF & Word Display Positioning.....	18
7. Checking the connection to the digital workstation.....	18
7.1 Activate the connection to the digital workstation.....	18
7.2 Testing the MIDI command for selecting a registration bank.....	19
8. if there is no connection.....	20
8.1 Genos/SX:.....	20
8.2 Tyros/PSR:.....	21
9. MIDI setup in the digital workstation.....	21
9.1 MIDI setup for Tyros/PSR-Sxxx connector=PORT1.....	22
9.2 Required SongList functions.....	25
9.3 MIDI Setup Genos/SXxxx Konnektor=PORT1.....	25
9.4 MIDI-Setup nur Genos.....	28
10. Using an External Footswitch (Behringer FCB-1010).....	29
11. Assigning the Digital Workstation of a MAC.....	29
12. Support and error messages.....	30
13. MFC Tyros/Genos (External Controller).....	30
14. The command file MFC10-External.csv.....	31
Important USER flash directories of the Genos.....	32



Installation SongList V1.4.3

Installation Information:

Attention:

First, configure your MIDI setup in your keyboard as shown in the pictures:

1. [MIDI setup \(Tyros & PSR-Sxxx\)](#)

or

2. [MIDI setup \(Genos & SX\)](#).

If you do not want to use the built-in functions of the monitor (**Monitor/Create scripts**) **Script** and **Voice-Set**, the configuration of **port 1 (Channel Ch1)** for **TRANSMIT** and **RECEIVE** is sufficient.

Set all other **TRANSMIT** and **RECEIVE** ports to **Off** in the **Keyboard**.

In **SongList Setup** to 0 and the port **Key/FNR** to 1.

Then connect your keyboard to the computer via a MIDI connection (USB, MIDI cable or network) so that the two MIDI devices can be displayed and selected by Windows.

Always start the keyboard first and only when Windows has recognized the keyboard start the SongList" program. Exit SongList first and only then the keyboard!

"SongList" requires write permissions in and below your selected installation directory. You cannot install it under "C:\Program Files (x86)", because Windows does not allow write permissions here.

If SongList and your keyboard have an active connection, the contact LED on the main page flashes, provided you have selected the two MIDI keyboard devices and activated the Input and Output switches in the setup.

For this reason, the setup suggests "C:\Program Files" German version "C:\Programme".

However, you can also use any other drive and directory that has the required rights for the user.

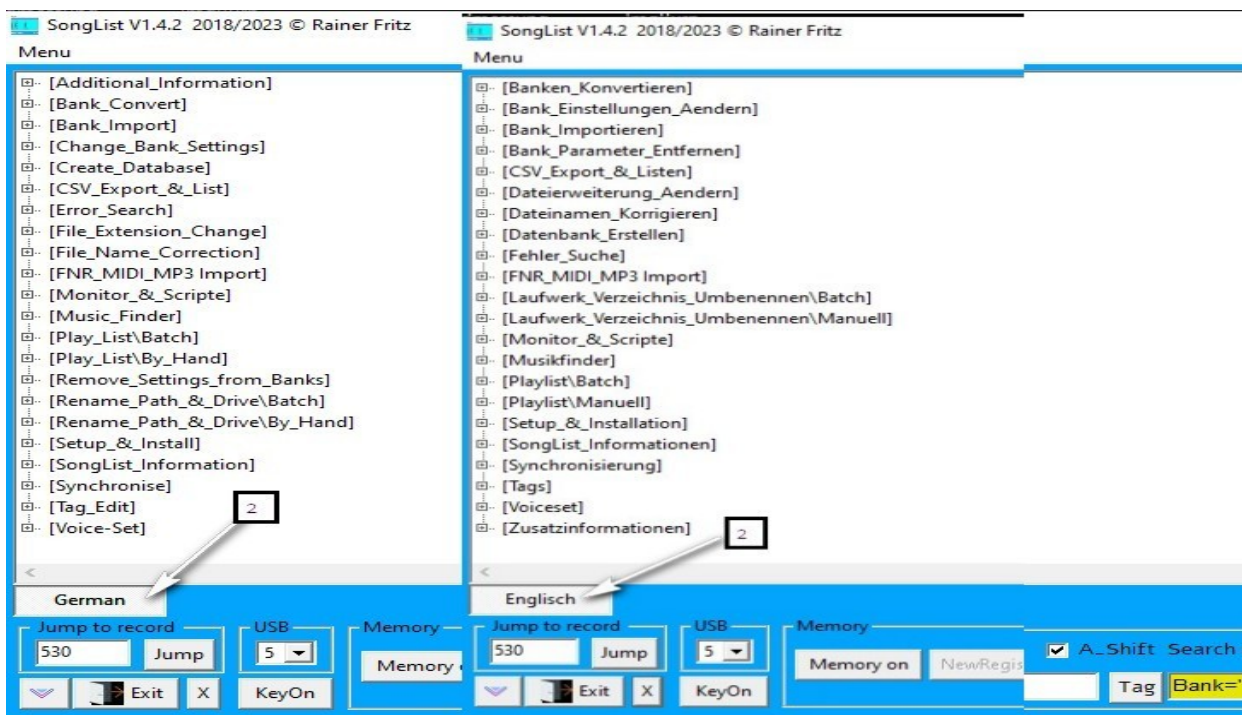
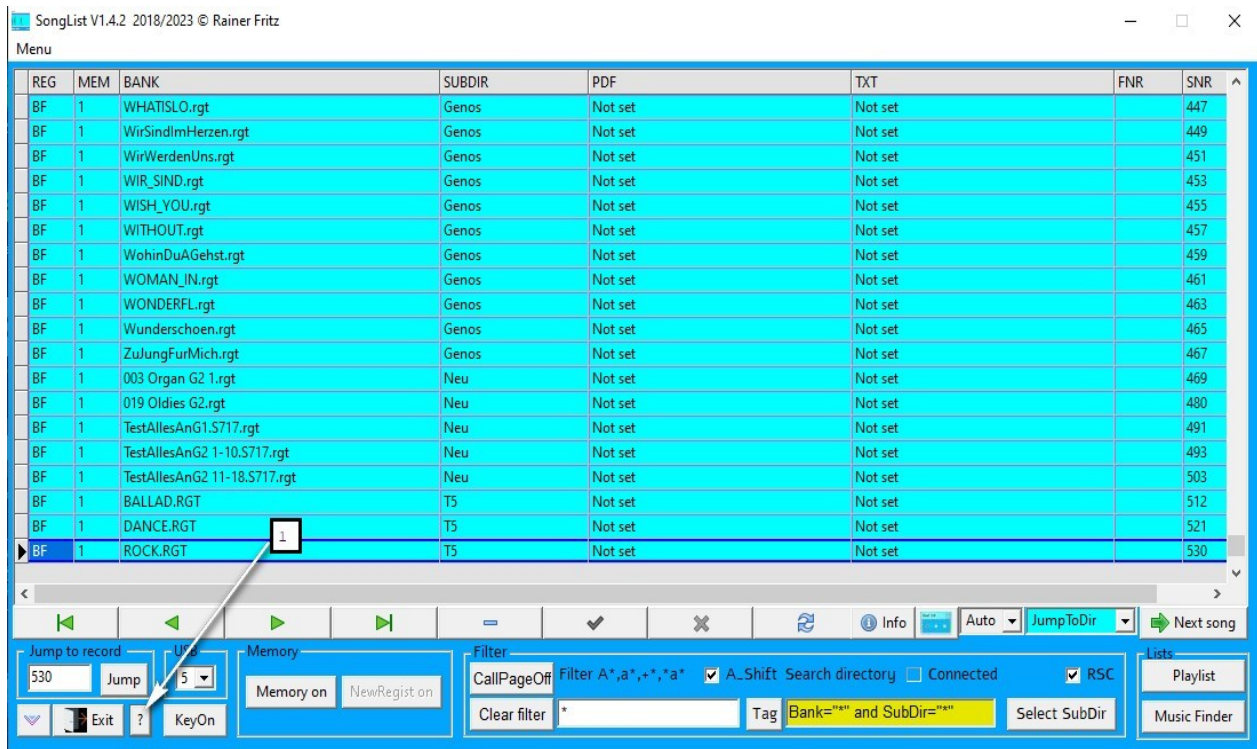
which has the necessary rights for the user. (e.g. "C:\SongList") The necessary rights are set by the setup for your directory. for your directory. You can also set the directory permissions manually.

See „**HelpSongListV143-De.Pdf**" Setting required file system rights" Page: 153

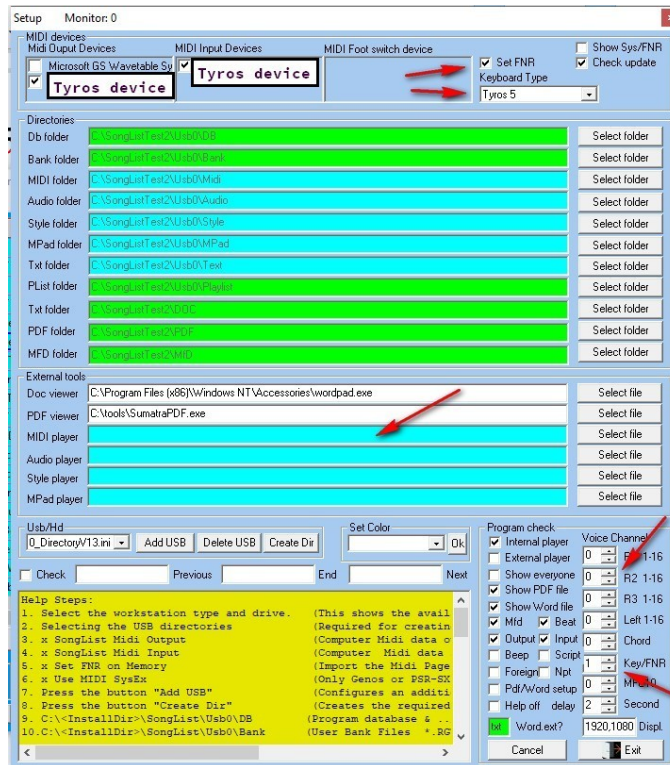
Language support

As of V1.4.2, SongList now supports several languages for help and programme queries, initially English and German. (English is the default) The programme interface remains in English, however, as many of the terms used are identical to the keyboard and are clearer.

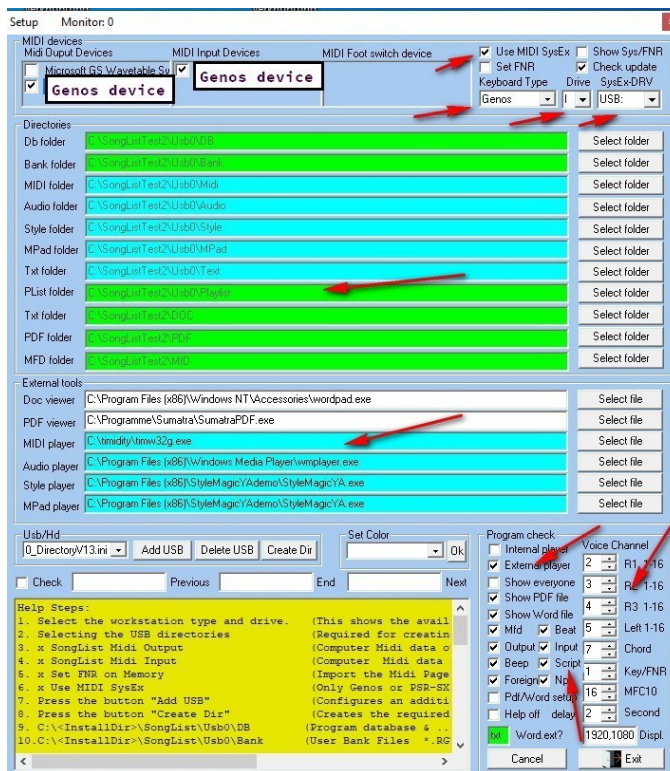
The installation setup sets a language setting depending on the selected language, which you can change at any time as follows. First select button 1 (?) then button 2!



Setup example 1: Tyros5 / PSR-Sxxx minimal without MIDI monitor & VoiceSet usage



Setup example 2: Genos / PSR-SX-xxx with use of all functions



1.Setup

Always start the keyboard first and only when Windows has recognised the keyboard should you start the "SongList" programme.

SongList" programme. The "Connect LED" flashes! Close SongList first and only then the keyboard!

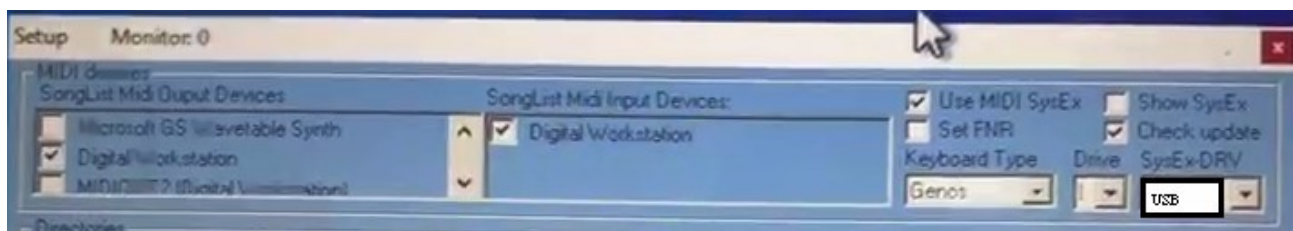
Now connect your computer to your digital workstation. For this you can use a "USB cable" or your network. This document describes a USB cable connection. is described.

Please select the required settings for your digital workstation according to the following pictures. your digital workstation.

All PSR and Tyros models

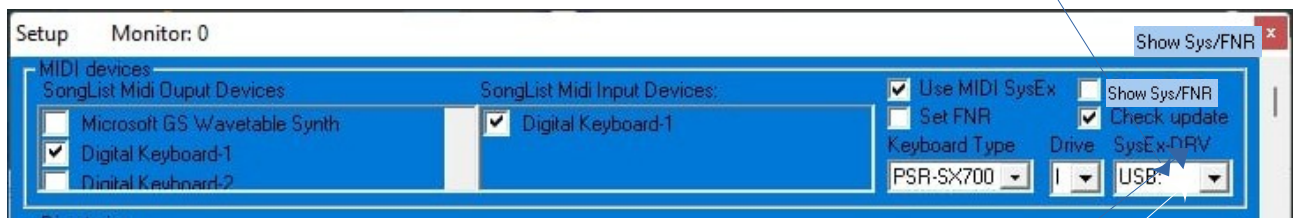


Genos



SX700/SX900

Default ist USB



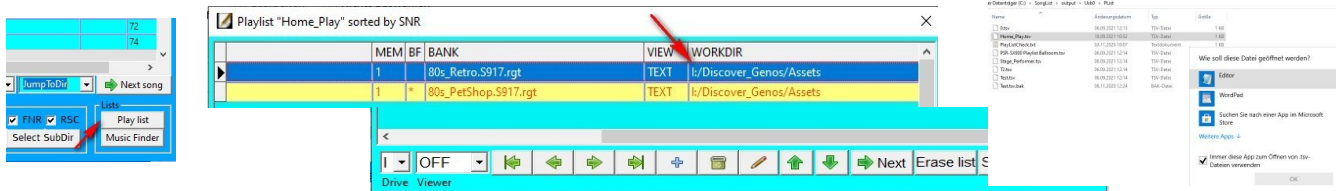
1.1 The "Set FNR" switch

Switch "Set FNR" (default is "ON" for older models), enables a call of the PDF, Word display in SongList from the digital workstation.

1.2 The Use MIDI SysEx switch (Genos or SX only)

As of "Genos" and "PSR-SX" the function "Use MIDI-SysEx" was introduced to load a bank on the keyboard. Using the „SysEx“ command eliminates the need for manual directory changes on the keyboard.

If you activate "Use MIDI-SysEx", please select an associated "SysEx-DRV" with the name of the of the "USB-Device" in which you have stored your registrations on the keyboard.
 "USB-Device" Default is "USB" and "Drive" Default is "I".



You can find the valid drive letter in one of your playlists, which you can open with a simple editor, e.g. right click and edit or in the playlist edit displayed with SongList. More information at the end of the text.

MyPlayList.tsv

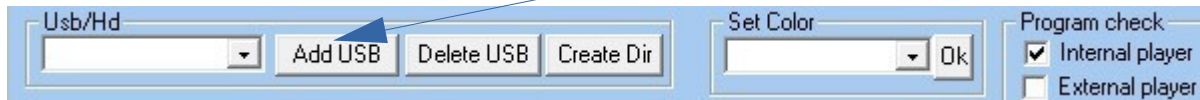
TITLE	FILEPATH	REGIST	OPENVIEWER
99 Luftballons	I:/Discover_Genos/Assets/Genos/80s_Retro.S917.rgt	0	TEXT
Its A Sin	I:/Discover_Genos/Assets/Genos/80s_PetShop.S917.rgt	OFF	TEXT

Hint:

If registrations are not loaded on the keyboard later, please activate the switch "Show Sys/FNR". Double-clicking on a DB entry in the main window will then display an information window with the send data. The content and the drive must exactly match the position on the keyboard USB stick! If there are any discrepancies, please correct your setup or "Sync Comp <> Workst," USB directory settings. If your keyboard is a Tyros or PSR-9/7, activate the Set FNR switch. An incoming MIDI signal will then be displayed if you have loaded a registration with an integrated FNR MIDI and press the associated Memory or Play button.

In practice, it has been shown that you should wait approx. 2s after loading a registration before pressing the Memory or the MIDI Play button so that the MIDI is fully loaded.

1.3 Create a configuration with the "ADD USB" button.



"SongList" supports up to 99 USB stick configurations, which you can easily switch online when you change the USB stick at the keyboard. The subdirectories on the USB stick and in "SongList" must be the same and may only have a directory depth of one.

z. e.g. "..\Banks\Aa_Af", "..\Banks\Ag_Az ..\Banks\Ba_Bf",

However, the parent directories may differ.

z. e.g. "..\Musicando\Banks\Aa_Af", "..\Yamaha\Banks\Ag_Az".

"SongList" automatically uses the penultimate directory for the local directory structure.

Thus, the above directories result in the following figure:

„c:\Installation directory\Banks\Aa_Af“ „c:\Installation directory\Banks\Ag_Az“ .

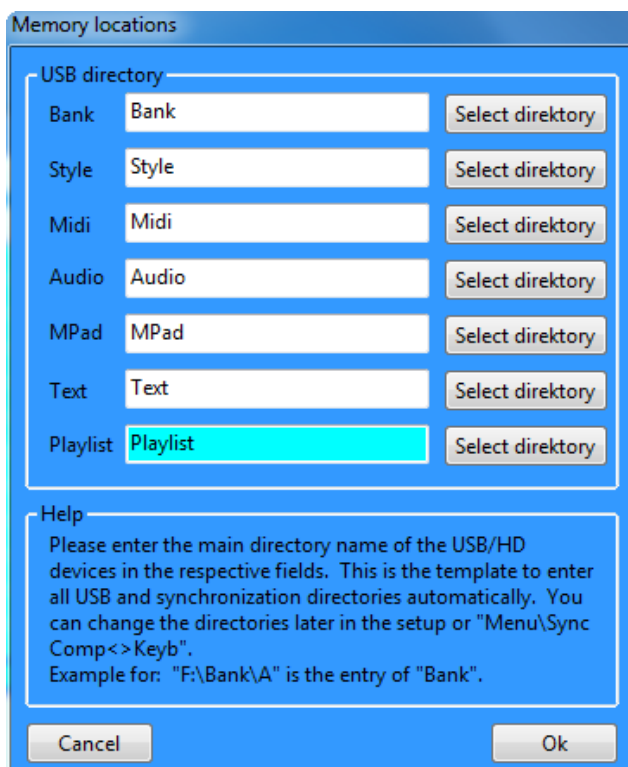
This applies to all directories used, even if you would use "registrations" as the directory name instead of "banks".

"c:\InstallationDirectory\Banks\Ag_Az" "c:\InstallationDirectory\Registrations\Ag_Az"

So choose your respective main registration, style directory etc. Note the following pictures.

1.4 Enter USB stick directories.

Only the selected subdirectory is used.



PC USB Device

D:\Files\Bank\A-B\

D:\Files\Style\A-B\

D:\Files\MIDI\A-B\

D:\Files\Audio\A-B\

D:\Files\MPAD\A-B\

D:\Files\Text\A-B\

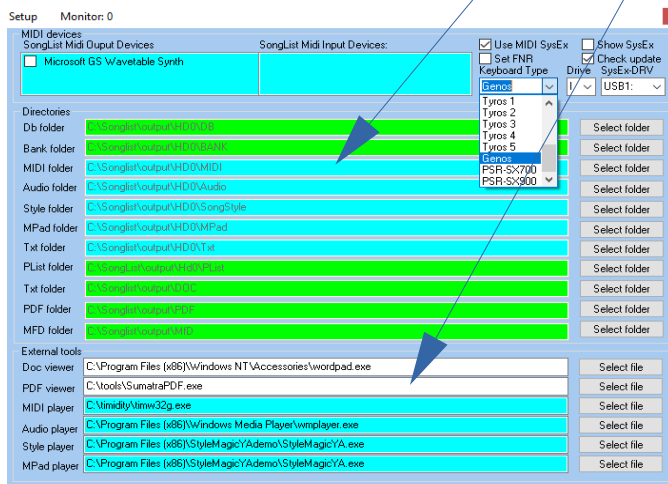
D:\Files\PlayList No subdirectory

For models before **Genos**, the Playlist entry is omitted; a PlayList directory is then automatically created on the computer in the current configuration.

These entry fields are also displayed if you need to correct or complete entries. You then create the directories by pressing the "Create Dir" button.

1.5 Set the required settings.

For a standard installation please fill in all green and white fields. For an advanced installation please fill in all fields.

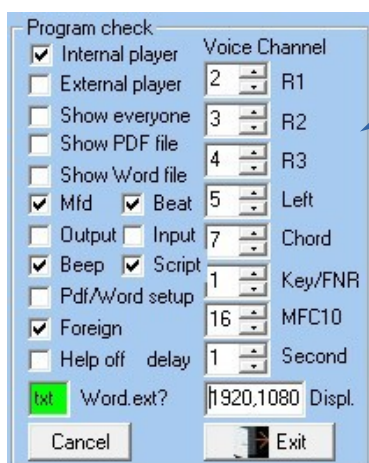


For advanced installation please fill in all fields.

1.6 Using MIDI data

If you want to log the MIDI commands in the monitor and use them in scripts, you must specify the Voice MIDI channels for a communication between the computer and the workstation. As an example, the ones used by the author are shown here. If you set R1,R2,R3,Left to 0 and Key/FNR to 1, the configuration is the same as SongListV1.3.4.

and does not support a "Monitor/Create Script" function. But this means that no new advanced MIDI setup is required on the workstation. First, please set up the setup to allow step-by-step installation without interference.



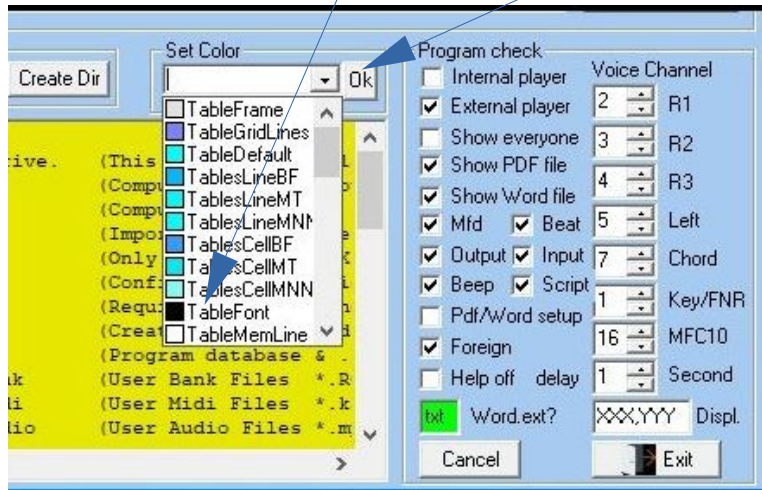
"Help off" turns off the large-scale help, "Delay" is the time a mouse has to be over a position until the short help is displayed.

1.7 Communication with the Digital Workstation

If you do not send or receive **MIDI** data (offline operation) you do not need a Midi Port "**Workstation**". Then deactivate **Output & Input** in the setup!

1.8 Set SongList colors

Select the SongList colors and button "ok"



1.9 PDF/Word setup

(Positioning the PDF & Word screen position)

In PDF and Word display mode, the mouse is disabled and used to control the display. The mouse pointer is frozen to prevent a distracting position during game play. Windows actions are no longer possible. To exit or cancel this display mode, please **press the middle mouse button** (scroll wheel) or the "**ESC**" key.

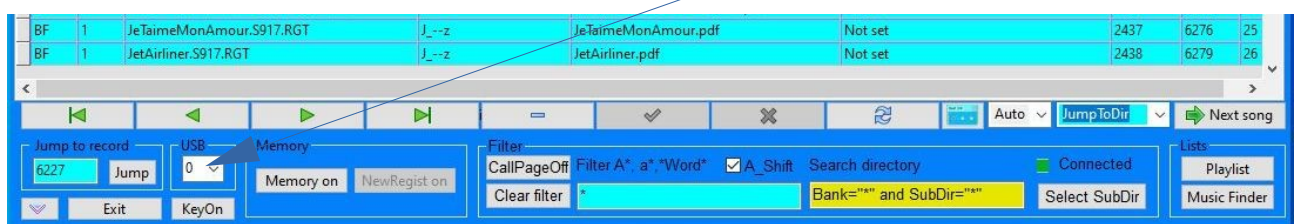
2. Loading your own workstation data.

2.1 Backup

Please make a backup of your files first, as they will be changed by "SongList" or can be unintentionally changed by your settings!

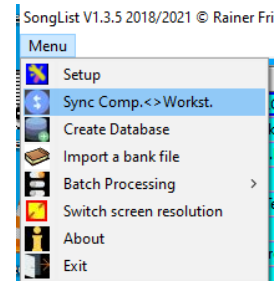
2.2 Selecting the "SongList" configuration

Change in "SongList" to your 1st "USB Configuration X"(USB X).



2.3 USB stick, hard disk or USER Flash

Now connect your USB stick to the computer and select the menu item "**Sync Comp. <> Workst.**".



For a synchronization directly from the workstation (hard disk), please read in the HelpSongListV143-De.Pdf Seite: 61

2.4 Creating the default registration

The file "..\WorkSt\DefaultBank\Default.S917.RGT" is automatically created when the database is set up if this file does not yet exist and you confirm the prompt to create it with "Yes". Confirm. To create it, you need a registration (bank) of your keyboard type in order to transfer your default settings from it.

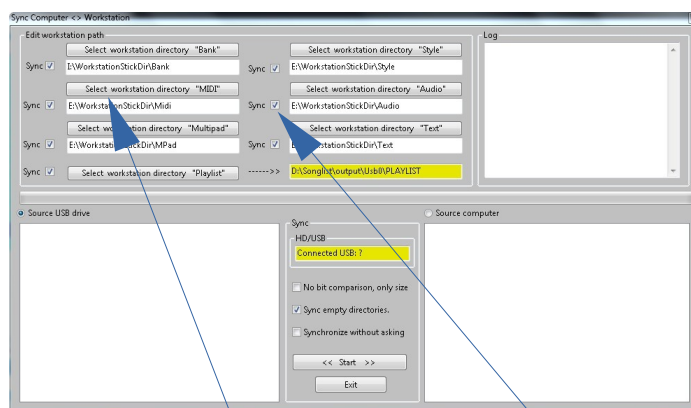
2.5 Changing the contents of the default registration

To reset the default values, simply delete the file "..\WorkSt\DefaultBank\Default.S917.RGT" and repeat the point. " 2.4 Creating the default registry".

The respective names and directories are freely selectable.

If directories are missing on the PC, they are created by "SongList".

For your safety, answer the question whether the stick should be marked with "**Yes**".



Please enter the correct **directories** and activate the "**Sync x**" markers.

2.6 Setting USB/hard disk/USER flash directories

At least the following directories are required on your USB flash drive or hard disk:

Default installation: Bank, PlayList (registrations)

Advanced installation: MIDI, Audio, Text, Style, Multipad, Audio

There are slightly more directories on the **USER flash** drive, as these are also used by the system. Never delete existing directories, as this will impair the function of the keyboard.

x:/MULTI PAD/**Multipad**/ , x:/PLAYLIST/**Playlist**, x:/REGIST/**Bank**/ x:/SONG/**Midi**/, x:/SONG/**Audio**/, x:/STYLE/**Style**/ x:/TEXT/**Text**/ and x:/VOICE/**Voice**/

Example of a directory structure:

To use a **USB stick** or **hard disk**, use only the **yellow** frames and the respective subdirectories of your choice.

For the **USER flash**, go to the **direct access mode** of the **USER flash** (Hold down the play button when switching on.)

Caution!

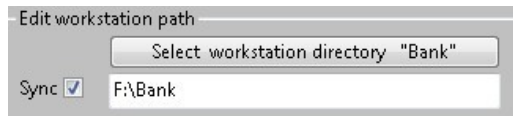
Never change or delete the directories framed in red and (**SYSTEM**)!

Create your own directories under the existing system directories (**red**)! (yellow)

When you exit the direct mode, you will only see the yellow directories with your data.



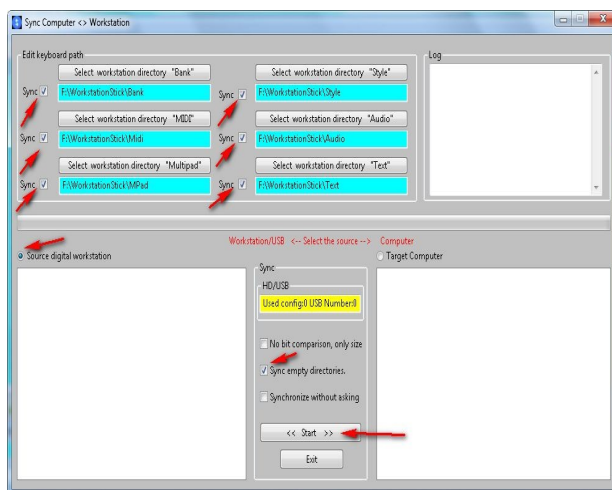
For a standard installation you only need the bank and playlist directory.



The PlayList entry exists only at Genos & SX.

For an advanced installation you need all directories.

In the upper right corner of the window you can see the log output.



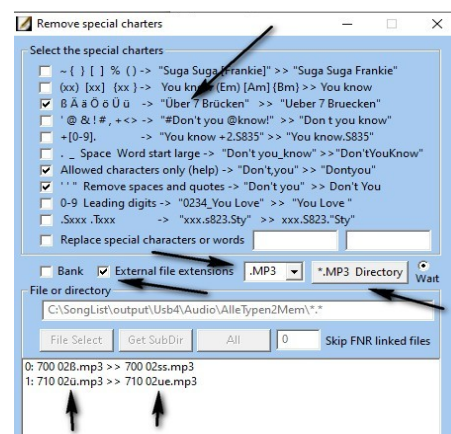
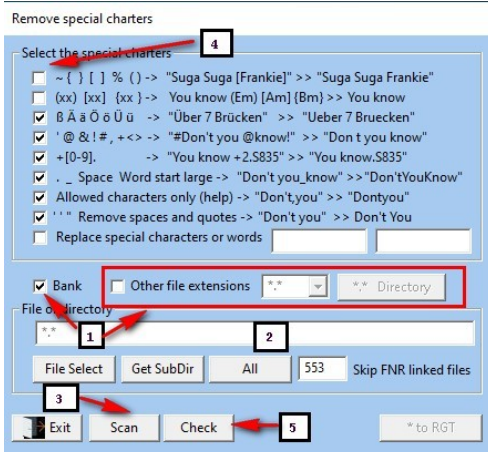
When the synchronization is complete, please create the database.

2.7 Create or link registrations with the help of MIDI/MP3.

With SongList you can have registrations created by any file type smaller than **30k** in the database by simply renaming them as ***.RGT** and copying them into the bank directory.

("Create Database") If you are working with MIDI/MP3 files, you can create the registrations using **"Batch processing /Import FNR/MIDI/MP3"** and have the respective files entered in them at the same time. To do this, copy the **MIDI** or **MP3** files into a temporary directory and remove the umlauts and special characters to prevent errors on the keyboard and in the sorting. As of **SongList version 1.4.2**, the umlauts for Genos and SX. are permitted, but older keyboards have a sorting problem.

1. to change the **MIDI/MP3** names with **"SongList"** into compliant registry names, please use the batch function **"Batch processing /Remove special charters"**.



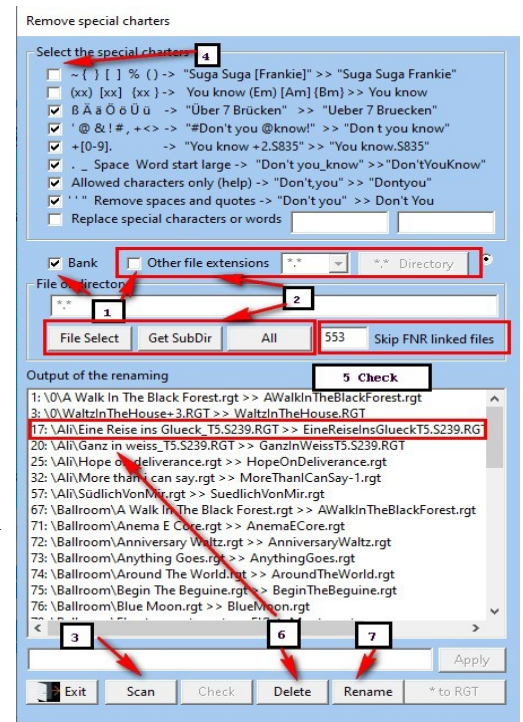
2. Activate under (2) "**MIDI/MP3**" and select by means of "**MIDI Directory**" to select a "**MIDI**" directory or subdirectory. Continue with (3) "**Scan**", now the checkboxes are set will be set automatically, which you can deactivate with (4) deactivate them. With (5) you can check your MIDI/MP3 files now. files and show the later renaming. With (6) you can protect single files from renaming by deleting them from the list. from the list. With (7) all files in the list will be renamed. rename all files in the list.

3.If necessary, you can rename the **MIDI/MP3** files to *.REG. files. (7) See the additional information

4. Import now your **MIDI** or **MP3** files with the function "**Batch processing /Import FNR/MIDI/MP3**" into the desired registrations and registrations and memory. The missing directories and registration banks are created automatically.

Additional information:

"**SongList**" replaces all *.**RGT** files, which do not contain a Yamaha registration do not contain a Yamaha registration, by a registration with an empty memory 1. (**..\WorkSt\DefaultBank\Default.S917.RGT**) **PDF** and **text** files will be assigned to the correct record automatically assigned to the correct record.



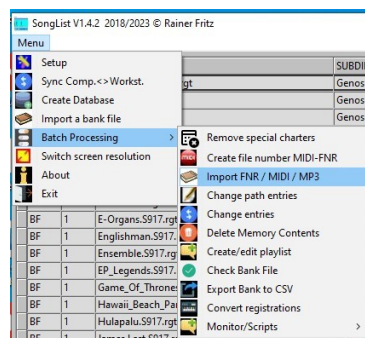
2.8 Importing MIDI/MP3 to the registrations and memory

1. create the required default registration if it has not been created yet. Create the database with „Create Database" and confirm the request to automatically create a standard registration with "Yes". (**..\WorkSt\DefaultBank\Default.S917.RGT**)

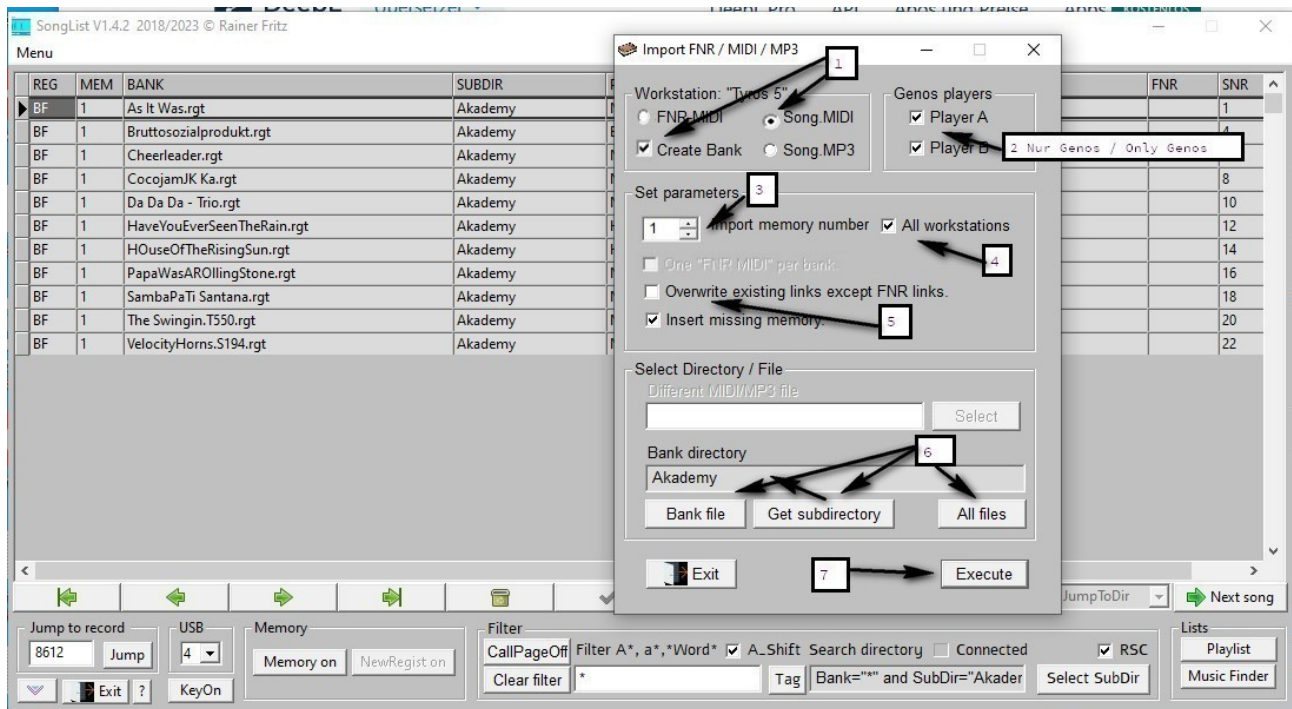
See more information in "**HelpSongListV143-De.Pdf**" tips **page: 149**

2. Copy the **MIDI/MP3** files to be imported into the **MIDI** or **audio** directory entered in the setup. or Audio directory with an additional subdirectory of your choice. (e.g. **..\MIDI\Ab-z** or **..\Audio\Ba-z**) (Do not nest deeper).

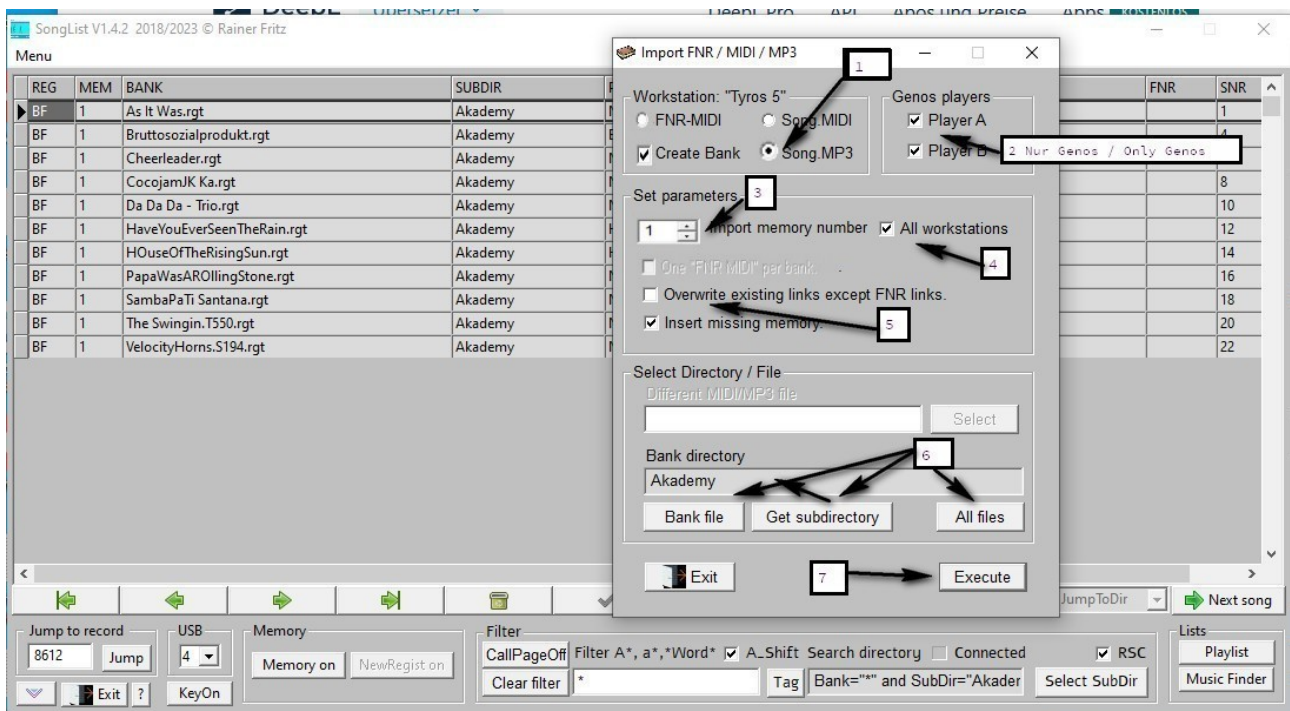
These directories will be created later by "**SongList**" in the bank directory entered in the setup. automatically by "**SongList**" if they do not exist and the checkbox "**Create Bank**" is activated. is activated. The created banks will then be stored in the respective directories. Activate the input fields and switches according to the following pictures one after the other.



Enter MIDI



Enter MP3



You can now also preset the volume of the **MIDI** or **MP3** file. (Not yet shown in the illustrations.) The **MIDI/MP3** files are also checked for maximum name length for maximum name length **"Max 38 characters.S999.M"** and readable MIDI tempo, as this is required for a correct entry. Incorrect files are displayed and can be deleted.

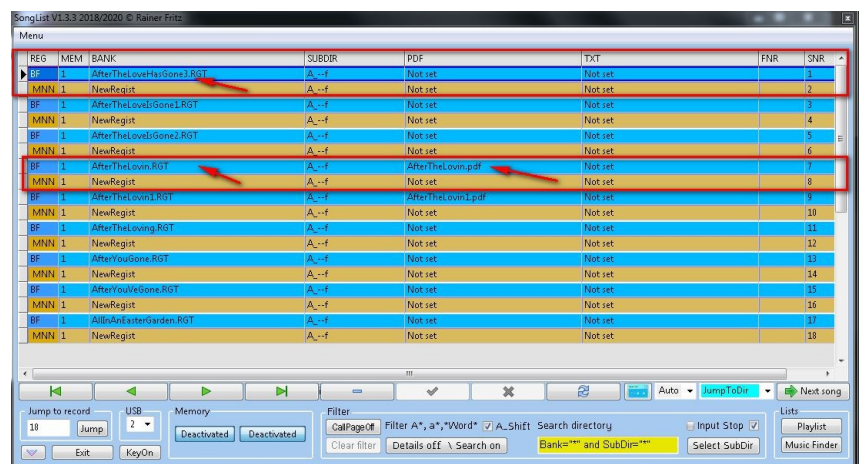
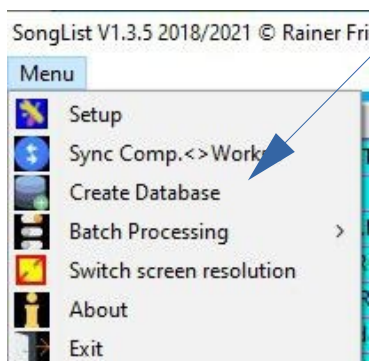
3. Create database

If your banks, MIDI and playlists are now completely on the PC, you can create the database and your playlists will be automatically converted or checked.

If banks are used in the playlist that are not available on the computer, these entries are automatically removed. The entries are checked for validity, i.e. Memory that is not available or Viewer entries that have no reference to the bank content are set to "OFF".



3.1 Now you create the database with "Menu/Create Database" and assign your PDF and Word files that were not recognized by hand. The question about „Check the playlists“, answer with "No".



4. Check and automatically change names of registrations.

"Songlist" is based on identical sorting of files in the computer and the workstation.

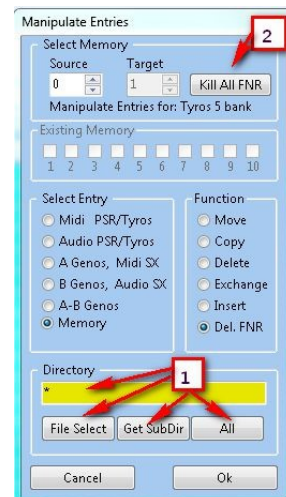
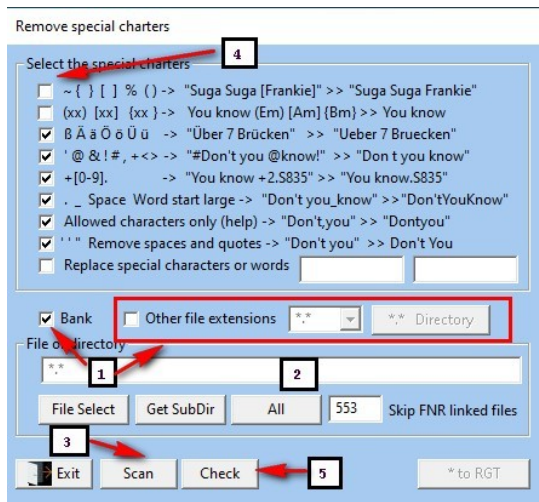
The data transfer is done via the file positions in the directories.

Otherwise as of Genos via a special SysEx command. Since different file systems and operating systems interpret the sorting in different ways, special characters and German umlauts should be removed from the file names of the banks. If you use your MIDI files to create the registry banks, this also applies to them.

4.1 Remove unwanted characters from bank names

Start „**Menu/Batch Processing/Remove special characters**“

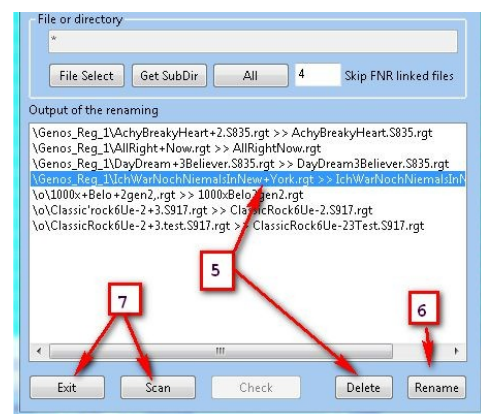
1. Select a file, directory or all.
2. "Scan" sets the switches automatically.
3. Manipulate the set settings.
4. Edit and display the changes.



FNR number links were found. Remove them before processing otherwise the relevant files are skipped. You can remove them with the Function. "**Menu/Batch Processing/Manipulate Entries**"

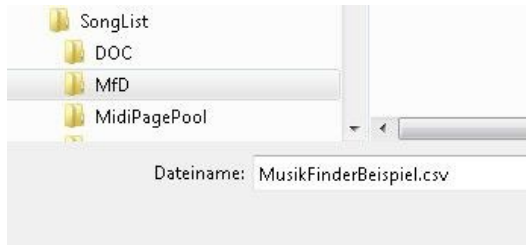
If identical bank names are generated by removing characters, they are replaced by numbered. Delete entries that should not be changed (5) or change the Settings. The changes are then made with button "Rename" (6).

Display of the proposed changes. Now assign your PDFs and Word files using SongList with "SongList" or rename the banks themselves to an banks to an identical name yourself. Rebuild the database afterwards to automatically assign these changed files.

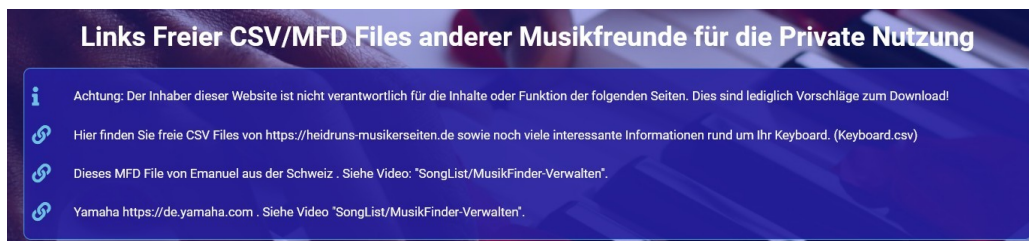


5. Create Music Finder database

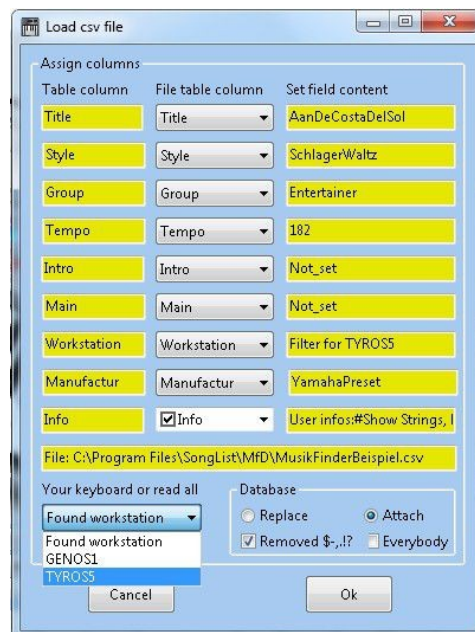
Now start the music finder by clicking the "MusicFinder" button.
Please confirm the message and then click on the "AddImport" button.



Now select in your "Installation directory\Mfd\MusicFinderExample.csv".
or "MusikFinderBeispiel.mfd" You can download more music filter files from my website **Fritz-Tools.de**.



If you select an "MFD" file, it is automatically converted to a "CSV" file and then used for charging.

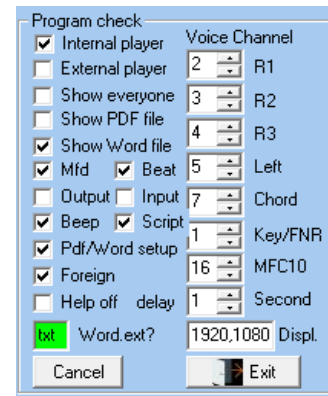


First select your workstation and set "Attach" or "Replace". (Add to bank or replace the bank)
Then press "Ok".

6. PDF & Word Display Positioning

To set up the display on the screen, please activate the the PDF/Word setup

First "Show Word file"



REG	MEM	BANK	SUBDIR	PDF	TXT
BF	1	Amsterdam.S917.RGT	Amsterdam MedleyT5	Amsterdam.pdf	Amsterdam.txt
BF	1	A Walk In The Black Forest.rgt	Ballroom	Not set	Not set

Then please assign a PDF and a Word file to the database.

With a double click on this entry you activate this display and position the document on the corresponding screen in the desired way. After that, close the display and activate "Show PDF file" and repeat this with the PDF. After the setup deactivate the "PDF/Word Setup" again.

7. Checking the connection to the digital workstation

7.1 Activate the connection to the digital workstation.

Now activate the following switches to enable sending and receiving to the digital workstation.

Output x

Input x



If you now load a bank (registration) on the digital workstation, which is stored in the "SongList" database, the stored Word/PDF files are displayed. If you double-click on a line in "SongList", this bank will also be loaded on the digital workstation and the Word/PDF documents and the Word/PDF documents will be displayed.

7.2 Testing the MIDI command for selecting a registration bank

(Genos/SX.. only) Follow this point only if the following prerequisite is fulfilled.

1. have a "**Genos**" or "**SX..**" workstation is connected.
2. the "**Connected LED**" on the "SongList" start page flashes. (Workstation is connected)
3. the "**Use MIDI SysEx**" switch is activated.

If you answer yes to all points, activate "**Show Sys/FNR**",



confirm the displayed instructions with Enter.

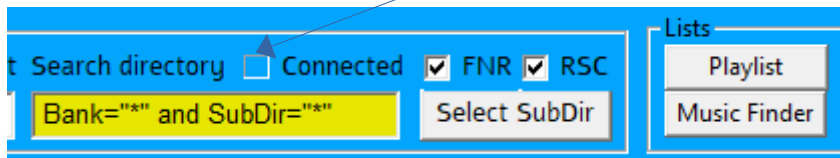
Load a registration on the workstation and activate the memory location containing the FNR-MIDI after approx. 2s. Alternatively, you can press the "Song Play" button. The computer should now give an acoustic signal and thus acknowledge the receipt of the MIDI command.

Now please deactivate the "**Show Sys/FNR**" switch again and continue in the setup.



8. if there is no connection

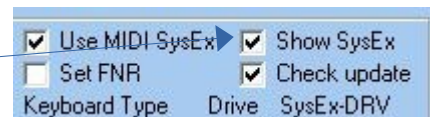
1. Check the USB cable connection
2. Restart the digital workstation
3. Check in the setup if an **input and output** device is selected
4. **Input** and **output** is activated
5. **Set-FNR** or **Use-MIDI-SysEx** is activated. (Tyros/PSR or Genos/SX)
6. Workstation type, drive, USB is set.
7. Check on the SongList start page the **Connect LED** is blinking and FNR + RSC are activated.



If the "Connect LED" is inactive, please check your MIDI connection & MIDI setup.
If the banks are not displayed or loaded on the keyboard, follow the steps below to check.

For the Tyros/PSR keyboard, the FNR MIDI must also be assigned and synchronised to the keyboard (stick).

Activate the "Show Sys/FNR" switch in the setup.



8.1 Genos/SX:

A request is now sent to the digital workstation, which responds with the currently loaded registration. This information is also displayed when loading a registration on the workstation.



The USB device must match the one set in the setup.

Now double-click an entry in the database and the message that would be sent appears. This command line should match the input device and the current location on the stick. If you find any discrepancies here, check your setup.



After ok, the bank should be loaded on the digital workstation.

8.2 Tyros/PSR:

This function is also useful for this workstation. Activate these switches and assign the required devices.



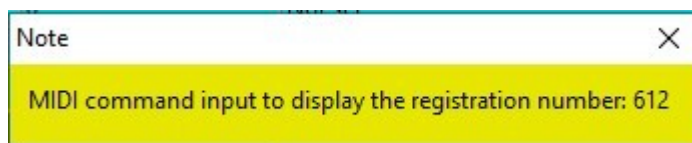
First link a registration to an FNR number MIDI. The easiest way is to click the cursor on an entry in the table and in the FNR column.

BF	1	OTannenbaum.S917.RGT	Weihnacht	OTannenbaum.pdf	Not set	6000	2711
BF	1	PleaseComeHomeForChristmas.S917.RGT	Weihnacht	PleaseComeHomeForChristmas.pdf	Not set	612	2718
BF	1	PleaseComeMomeForChristmas.S917.RGT	Weihnacht	PleaseComeMomeForChristmas.pdf	Not set	6120	2726

By pressing the pencil button, you automatically create an FNR-MIDI and link it to this entry. Now copy these registrations with the corresponding FNR-MIDI to a stick in the same directory.



Now load this registration on the workstation. There should now be an information about the requested FNR number should be displayed in SongList, which corresponds to the registration bank entry FNR.



If this FNR number is wrong, your assignment of the MIDI FNR on the keyboard does not match the one in SongList. You should then synchronise the corresponding banks.

You can also use this function to check FNR entries of the registrations in SongList and the workstation if they get a wrong display when starting a bank.

Now deactivate Show Sys/FNR again.

9. MIDI setup in the digital workstation

To use the new function, it is mandatory to set the MIDI Setup on your digital workstation. If you do not use any other MIDI devices, please set the fields according to the following pictures. If you use additional MIDI devices, you have to adjust the respective ports accordingly.

9.1 MIDI setup for Tyros/PSR-Sxxx connector=PORT1

If you don't do this setup on the keyboard, you can't use the "SongList" function.

If you prefer to use port 2, swap the settings of port 1 and port 2.

First load the MIDI setup: **"All Parts"**.



Switch to the tab: **"USER"** and save the settings as **"SongList"**.
Then switch to **EDIT** mode, tab **"System"** and set all parameters.

Tab: **System**



Check „Clock:Internal“

Set „Transmit Clock“ auf „ON“

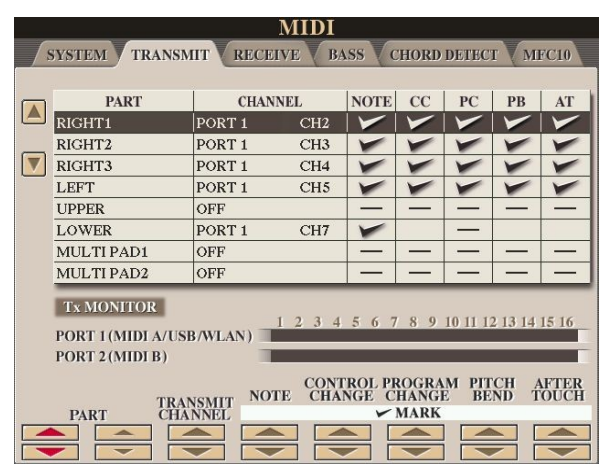
Set „Start/Stop“ auf „Style“

Set „RECEIVE TRANSPOSE“ auf „ON“

Tab: **System**



Tab: **Transmit**



Tab: Transmit

MIDI

SYSTEM TRANSMIT RECEIVE BASS CHORD DETECT MFC10

PART	CHANNEL	NOTE	CC	PC	PB	AT
SONG CH1	PORT 1 CH1	<input checked="" type="checkbox"/>	<input checked="" type="checkbox"/>	<input checked="" type="checkbox"/>	<input checked="" type="checkbox"/>	<input checked="" type="checkbox"/>
SONG CH2	OFF	<input type="checkbox"/>	<input type="checkbox"/>	<input type="checkbox"/>	<input type="checkbox"/>	<input type="checkbox"/>
SONG CH3	OFF	<input type="checkbox"/>	<input type="checkbox"/>	<input type="checkbox"/>	<input type="checkbox"/>	<input type="checkbox"/>
SONG CH4	OFF	<input type="checkbox"/>	<input type="checkbox"/>	<input type="checkbox"/>	<input type="checkbox"/>	<input type="checkbox"/>
SONG CH5	OFF	<input type="checkbox"/>	<input type="checkbox"/>	<input type="checkbox"/>	<input type="checkbox"/>	<input type="checkbox"/>
SONG CH6	OFF	<input type="checkbox"/>	<input type="checkbox"/>	<input type="checkbox"/>	<input type="checkbox"/>	<input type="checkbox"/>
SONG CH7	OFF	<input type="checkbox"/>	<input type="checkbox"/>	<input type="checkbox"/>	<input type="checkbox"/>	<input type="checkbox"/>
SONG CH8	OFF	<input type="checkbox"/>	<input type="checkbox"/>	<input type="checkbox"/>	<input type="checkbox"/>	<input type="checkbox"/>

Tx MONITOR

PORT 1 (MIDI A/USB/WLAN) 1 2 3 4 5 6 7 8 9 10 11 12 13 14 15 16

PORT 2 (MIDI B)

PART TRANSMIT CHANNEL NOTE CONTROL PROGRAM PITCH AFTER
CHANGE CHANGE BEND TOUCH
☒ MARK

Tab: Transmit

MIDI

SYSTEM TRANSMIT RECEIVE BASS CHORD DETECT MFC10

PART	CHANNEL	NOTE	CC	PC	PB	AT
SONG CH9	OFF	<input type="checkbox"/>	<input type="checkbox"/>	<input type="checkbox"/>	<input type="checkbox"/>	<input type="checkbox"/>
SONG CH10	OFF	<input type="checkbox"/>	<input type="checkbox"/>	<input type="checkbox"/>	<input type="checkbox"/>	<input type="checkbox"/>
SONG CH11	OFF	<input type="checkbox"/>	<input type="checkbox"/>	<input type="checkbox"/>	<input type="checkbox"/>	<input type="checkbox"/>
SONG CH12	OFF	<input type="checkbox"/>	<input type="checkbox"/>	<input type="checkbox"/>	<input type="checkbox"/>	<input type="checkbox"/>
SONG CH13	OFF	<input type="checkbox"/>	<input type="checkbox"/>	<input type="checkbox"/>	<input type="checkbox"/>	<input type="checkbox"/>
SONG CH14	OFF	<input type="checkbox"/>	<input type="checkbox"/>	<input type="checkbox"/>	<input type="checkbox"/>	<input type="checkbox"/>
SONG CH15	OFF	<input type="checkbox"/>	<input type="checkbox"/>	<input type="checkbox"/>	<input type="checkbox"/>	<input type="checkbox"/>
SONG CH16	OFF	<input type="checkbox"/>	<input type="checkbox"/>	<input type="checkbox"/>	<input type="checkbox"/>	<input type="checkbox"/>

Tx MONITOR

PORT 1 (MIDI A/USB/WLAN) 1 2 3 4 5 6 7 8 9 10 11 12 13 14 15 16

PORT 2 (MIDI B)

PART TRANSMIT CHANNEL NOTE CONTROL PROGRAM PITCH AFTER
CHANGE CHANGE BEND TOUCH
☒ MARK

Tab: Receive

MIDI

SYSTEM TRANSMIT RECEIVE BASS CHORD DETECT MFC10

CHANNEL	PART	NOTE	CC	PC	PB	AT
PORT 1 CH1	KEYBOARD	<input checked="" type="checkbox"/>	<input checked="" type="checkbox"/>	<input checked="" type="checkbox"/>	<input checked="" type="checkbox"/>	<input checked="" type="checkbox"/>
PORT 1 CH2	RIGHT1	<input checked="" type="checkbox"/>	<input checked="" type="checkbox"/>	<input checked="" type="checkbox"/>	<input checked="" type="checkbox"/>	<input checked="" type="checkbox"/>
PORT 1 CH3	RIGHT2	<input checked="" type="checkbox"/>	<input checked="" type="checkbox"/>	<input checked="" type="checkbox"/>	<input checked="" type="checkbox"/>	<input checked="" type="checkbox"/>
PORT 1 CH4	RIGHT3	<input checked="" type="checkbox"/>	<input checked="" type="checkbox"/>	<input checked="" type="checkbox"/>	<input checked="" type="checkbox"/>	<input checked="" type="checkbox"/>
PORT 1 CH5	LEFT	<input checked="" type="checkbox"/>	<input checked="" type="checkbox"/>	<input checked="" type="checkbox"/>	<input checked="" type="checkbox"/>	<input checked="" type="checkbox"/>
PORT 1 CH6	OFF	<input type="checkbox"/>	<input type="checkbox"/>	<input type="checkbox"/>	<input type="checkbox"/>	<input type="checkbox"/>
PORT 1 CH7	OFF	<input type="checkbox"/>	<input type="checkbox"/>	<input type="checkbox"/>	<input type="checkbox"/>	<input type="checkbox"/>
PORT 1 CH8	OFF	<input type="checkbox"/>	<input type="checkbox"/>	<input type="checkbox"/>	<input type="checkbox"/>	<input type="checkbox"/>

Rx MONITOR

PORT 1 (MIDI A/USB 1/WLAN) 1 2 3 4 5 6 7 8 9 10 11 12 13 14 15 16

PORT 2 (MIDI B/USB 2)

CHANNEL PART NOTE CONTROL PROGRAM PITCH AFTER
CHANGE CHANGE BEND TOUCH
☒ MARK

Tab: Bass

MIDI

SYSTEM TRANSMIT RECEIVE BASS CHORD DETECT MFC10

ON BASS NOTE

PORT 1 1 2 3 4 5 6 7 8 9 10 11 12 13 14 15 16

PORT 2 1 2 3 4 5 6 7 8 9 10 11 12 13 14 15 16

Rx MONITOR **ALL OFF**

PORT 1 (MIDI A/USB 1/WLAN) 1 2 3 4 5 6 7 8 9 10 11 12 13 14 15 16

PORT 2 (MIDI B/USB 2)

CHANNEL

1 2 3 4 5 6 7 8
ON OFF ON OFF ON OFF ON OFF ON OFF ON OFF ON OFF ON OFF

Tab: Chord

MIDI

SYSTEM TRANSMIT RECEIVE BASS CHORD DETECT MFC10

CHORD DETECT

PORT 1 1 2 3 4 5 6 7 8 9 10 11 12 13 14 15 16

PORT 2 1 2 3 4 5 6 7 8 9 10 11 12 13 14 15 16

Rx MONITOR **ALL OFF**

PORT 1 (MIDI A/USB 1/WLAN) 1 2 3 4 5 6 7 8 9 10 11 12 13 14 15 16

PORT 2 (MIDI B/USB 2)

CHANNEL

1 2 3 4 5 6 7 8
ON OFF ON OFF ON OFF ON OFF ON OFF ON OFF ON OFF ON OFF

Tab: MFC10 (Only Tyros/Genos)

MIDI

SYSTEM TRANSMIT RECEIVE BASS CHORD DETECT MFC10

FOOT SWITCH SETTING

SWITCH NO.	NOTE	FUNCTION
0	C#-1	REGIST 1
1	D-1	REGIST 2
2	E-1	REGIST 3
3	F-1	REGIST 4
4	F#-1	REGIST 5
5	G-1	REGIST 6
6	G-1	REGIST 7

OFF MIDI A MIDI B USB 1 USB 2

CH SELECT 16

SEND MFC10 SETUP

FOOT CONTROLLER SETTING

CONTROLLER NO.	CC	FUNCTION	PART
1	7	OFF	RIGHT1
2	1	OFF	RIGHT1
3	2	OFF	RIGHT1

*Mit Ausnahme von STYLE-Parts.

Tab: MFC10 (Only Tyros/Genos)

Tab: MFC10 (Only Tyros/Genos)

MIDI

SYSTEM TRANSMIT RECEIVE BASS CHORD DETECT **MFC10**

FOOT SWITCH SETTING

SWITCH NO.	NOTE	FUNCTION
7	A-1	REGIST 8
8	A-1	Regist 9 (OFF)
9	B-1	Regist 10 (OFF)
10	B-1	STYLE START/STOP
11	C0	SYNCHRO STOP
12	C#0	FILL SELF
13	D0	FILL DOWN

OFF MIDI A MIDI B
USB 1
USB 2

CH SELECT 16

SEND MFC10 SETUP

FOOT CONTROLLER SETTING

CONTROLLER NO.	CC	FUNCTION	PART
1	7	OFF	RIGHT1
2	1	OFF	RIGHT1
3	2	OFF	RIGHT1

*Mit Ausnahme von STYLE-Parts.

Tab: **MFC10** (Only Tyros/Genos)

MIDI

SYSTEM TRANSMIT RECEIVE BASS CHORD DETECT **MFC10**

FOOT SWITCH SETTING

SWITCH NO.	NOTE	FUNCTION
14	E#0	FILL UP
15	E0	MULTI PAD 1
16	F0	MULTI PAD 2
17	F#0	MULTI PAD 3
18	G0	MULTI PAD 4
19	A#0	MULTI PAD STOP
20	A0	TAP TEMPO

OFF MIDI A MIDI B
USB 1
USB 2

CH SELECT 16

SEND MFC10 SETUP

FOOT CONTROLLER SETTING

CONTROLLER NO.	CC	FUNCTION	PART
1	7	OFF	RIGHT1
2	1	OFF	RIGHT1
3	2	OFF	RIGHT1

*Mit Ausnahme von STYLE-Parts.

Tab: **MFC10** (Only Tyros/Genos)

MIDI

SYSTEM TRANSMIT RECEIVE BASS CHORD DETECT **MFC10**

FOOT SWITCH SETTING

SWITCH NO.	NOTE	FUNCTION
21	B#0	TRANSPOSE +
22	B0	TRANSPOSE -
23	C1	OTS 1
24	C#1	OTS 2
25	D1	OTS 3
26	E#1	OTS 4
27	E1	REGIST SEQ. +

OFF MIDI A MIDI B
USB 1
USB 2

CH SELECT 16

SEND MFC10 SETUP

FOOT CONTROLLER SETTING

CONTROLLER NO.	CC	FUNCTION	PART
1	7	OFF	RIGHT1
2	1	OFF	RIGHT1
3	2	OFF	RIGHT1

*Mit Ausnahme von STYLE-Parts.

MIDI

SYSTEM TRANSMIT RECEIVE BASS CHORD DETECT **MFC10**

FOOT SWITCH SETTING

SWITCH NO.	NOTE	FUNCTION
23	C1	OTS 1
24	C#1	OTS 2
25	D1	OTS 3
26	E#1	OTS 4
27	E1	REGIST SEQ. +
28	F1	REGIST SEQ. -
29	F#1	SUSTAIN

OFF MIDI A MIDI B
USB 1
USB 2

CH SELECT 16

SEND MFC10 SETUP

FOOT CONTROLLER SETTING

CONTROLLER NO.	CC	FUNCTION	PART
1	7	OFF	RIGHT1
2	1	OFF	RIGHT1
3	2	OFF	RIGHT1

*Mit Ausnahme von STYLE-Parts.

Now please save these settings again.

MIDI

PRESET USER

INPUT KEY

LEARNCHORD

SONGLIST

VOICE OTS

SAVE

SONGLIST_

CASE	...@1	ABC2	DEF3	GHI4	JKL5	MNO6	OK
ICON	PQRS7	TUV8	WXYZ9	+ - 0	SYMBOL	DELETE	CANCEL

9.2 Required SongList functions

System: Set the sending and receiving MIDI signals

Trasmit:

Left, R1,R2,R3, Lower, Song1 (Lower = chord keys, Song1=keyboard function)

Receive:

Keyboard, R1,R2,R3, Left (Keyboard=keyboard control function)

Chord: (Send the chord keys)

Chords keys

MFC10: (Additional functions)

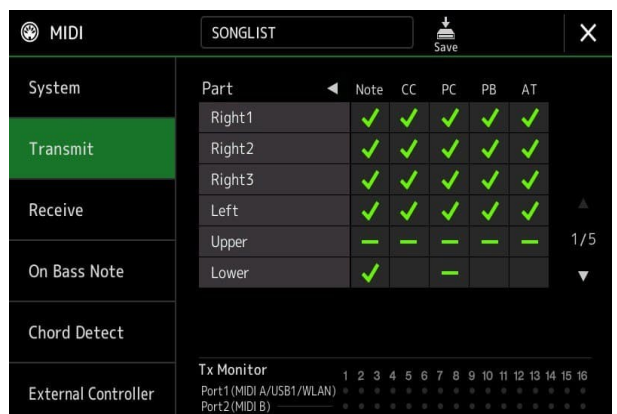
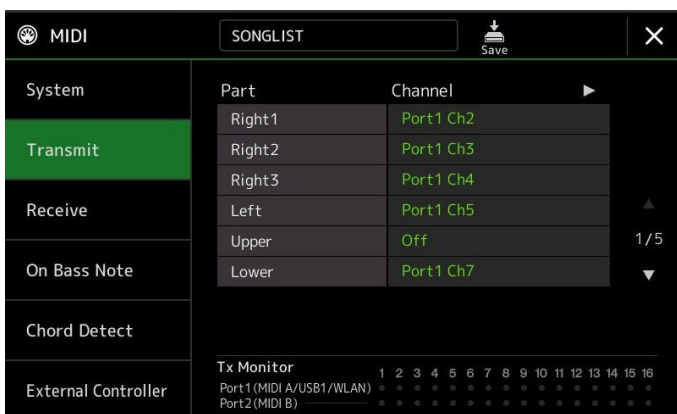
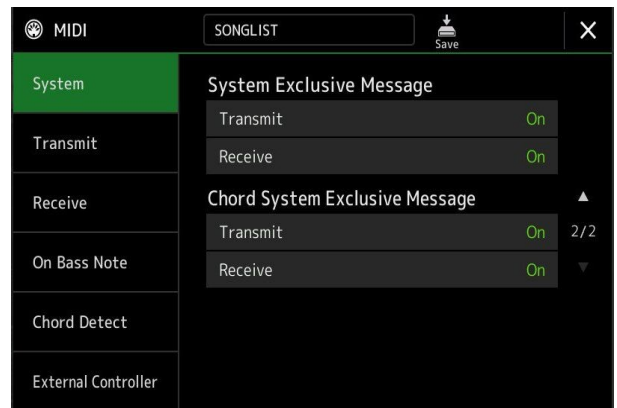
Tyros and Genos only (Additional control of many keyboard functions)

9.3 MIDI Setup Genos/SXxxx Konnektor=PORT1

If you do not perform this setup on the keyboard, you will not be able to use the "SongList" function.

If you prefer to use port 2, swap the settings of port 1 and port 2.

First load the MIDI setup: "All Parts" and save it as "SongList"



MIDI SONGLIST Save

System	Part	Channel	
Transmit	Multi Pad1	Off	▶
	Multi Pad2	Off	
	Multi Pad3	Off	
	Multi Pad4	Off	
Receive			▲
On Bass Note			▼
Chord Detect			
External Controller	Tx Monitor		
	Port1 (MIDI A/USB1/WLAN)	1 2 3 4 5 6 7 8 9 10 11 12 13 14 15 16	
	Port2 (MIDI B)		

2/5

MIDI SONGLIST Save

System	Part	Note	CC	PC	PB	AT	
Transmit	Multi Pad1	—	—	—	—	—	▶
	Multi Pad2	—	—	—	—	—	
	Multi Pad3	—	—	—	—	—	
	Multi Pad4	—	—	—	—	—	
Receive							▲
On Bass Note							▼
Chord Detect							
External Controller	Tx Monitor						
	Port1 (MIDI A/USB1/WLAN)	1 2 3 4 5 6 7 8 9 10 11 12 13 14 15 16					
	Port2 (MIDI B)						

2/5

MIDI SONGLIST Save

System	Part	Channel	
Transmit	Style Rhythm1	Off	▶
	Style Rhythm2	Off	
	Style Bass	Off	
	Style Chord1	Off	
Receive			▲
On Bass Note			▼
Chord Detect			
External Controller	Tx Monitor		
	Port1 (MIDI A/USB1/WLAN)	1 2 3 4 5 6 7 8 9 10 11 12 13 14 15 16	
	Port2 (MIDI B)		

3/5

MIDI SONGLIST Save

System	Part	Note	CC	PC	PB	AT	
Transmit	Style Rhythm1	—	—	—	—	—	▶
	Style Rhythm2	—	—	—	—	—	
	Style Bass	—	—	—	—	—	
	Style Chord1	—	—	—	—	—	
Receive							▲
On Bass Note							▼
Chord Detect							
External Controller	Tx Monitor						
	Port1 (MIDI A/USB1/WLAN)	1 2 3 4 5 6 7 8 9 10 11 12 13 14 15 16					
	Port2 (MIDI B)						

3/5

MIDI SONGLIST Save

System	Part	Channel	
Transmit	Song Ch1	Port1 Ch1	▶
	Song Ch2	Off	
	Song Ch3	Off	
	Song Ch4	Off	
Receive			▲
On Bass Note			▼
Chord Detect			
External Controller	Tx Monitor		
	Port1 (MIDI A/USB1/WLAN)	1 2 3 4 5 6 7 8 9 10 11 12 13 14 15 16	
	Port2 (MIDI B)		

4/5

MIDI SONGLIST Save

System	Part	Note	CC	PC	PB	AT	
Transmit	Song Ch1	—	✓	✓	—	—	▶
	Song Ch2	—	—	—	—	—	
	Song Ch3	—	—	—	—	—	
	Song Ch4	—	—	—	—	—	
Receive							▲
On Bass Note							▼
Chord Detect							
External Controller	Tx Monitor						
	Port1 (MIDI A/USB1/WLAN)	1 2 3 4 5 6 7 8 9 10 11 12 13 14 15 16					
	Port2 (MIDI B)						

4/5

MIDI SONGLIST Save

System	Part	Channel	
Transmit	Song Ch9	Off	▶
	Song Ch10	Off	
	Song Ch11	Off	
	Song Ch12	Off	
Receive			▲
On Bass Note			▼
Chord Detect			
External Controller	Tx Monitor		
	Port1 (MIDI A/USB1/WLAN)	1 2 3 4 5 6 7 8 9 10 11 12 13 14 15 16	
	Port2 (MIDI B)		

5/5

MIDI SONGLIST Save

System	Part	Note	CC	PC	PB	AT	
Transmit	Song Ch9	—	—	—	—	—	▶
	Song Ch10	—	—	—	—	—	
	Song Ch11	—	—	—	—	—	
	Song Ch12	—	—	—	—	—	
Receive							▲
On Bass Note							▼
Chord Detect							
External Controller	Tx Monitor						
	Port1 (MIDI A/USB1/WLAN)	1 2 3 4 5 6 7 8 9 10 11 12 13 14 15 16					
	Port2 (MIDI B)						

5/5

MIDI SONGLIST Save X

System	Channel	Part
Transmit	Port1 Ch1	Keyboard
	Port1 Ch2	Right1
	Port1 Ch3	Right2
	Port1 Ch4	Right3
	Port1 Ch5	Left
	Port1 Ch6	Off
	Port1 Ch7	Off
	Port1 Ch8	Off
Receive		1/4
On Bass Note		▼
Chord Detect		
External Controller	Receive Monitor Port1 (MIDI A/USB1/WLAN) 1 2 3 4 5 6 7 8 9 10 11 12 13 14 15 16 Port2 (MIDI B/USB2)	

MIDI SONGLIST Save X

System	Channel	Note	CC	PC	PB	AT
Transmit	Port1 Ch1	✓	✓	✓	✓	✓
	Port1 Ch2	✓	✓	✓	✓	✓
	Port1 Ch3	✓	✓	✓	✓	✓
	Port1 Ch4	✓	✓	✓	✓	✓
	Port1 Ch5	✓	✓	✓	✓	✓
	Port1 Ch6	—	—	—	—	—
	Port1 Ch7	—	—	—	—	—
	Port1 Ch8	—	—	—	—	—
Receive						1/4
On Bass Note						▼
Chord Detect						
External Controller	Receive Monitor Port1 (MIDI A/USB1/WLAN) 1 2 3 4 5 6 7 8 9 10 11 12 13 14 15 16 Port2 (MIDI B/USB2)					

MIDI SONGLIST Save X

System	Channel	Part
Transmit	Port1 Ch9	Off
	Port1 Ch10	Off
	Port1 Ch11	Off
	Port1 Ch12	Off
	Port1 Ch13	Off
	Port1 Ch14	Off
	Port1 Ch15	Off
	Port1 Ch16	Off
Receive		2/4
On Bass Note		▼
Chord Detect		
External Controller	Receive Monitor Port1 (MIDI A/USB1/WLAN) 1 2 3 4 5 6 7 8 9 10 11 12 13 14 15 16 Port2 (MIDI B/USB2)	

MIDI SONGLIST Save X

System	Channel	Note	CC	PC	PB	AT
Transmit	Port1 Ch9	—	—	—	—	—
	Port1 Ch10	—	—	—	—	—
	Port1 Ch11	—	—	—	—	—
	Port1 Ch12	—	—	—	—	—
	Port1 Ch13	—	—	—	—	—
	Port1 Ch14	—	—	—	—	—
	Port1 Ch15	—	—	—	—	—
	Port1 Ch16	—	—	—	—	—
Receive						2/4
On Bass Note						▼
Chord Detect						
External Controller	Receive Monitor Port1 (MIDI A/USB1/WLAN) 1 2 3 4 5 6 7 8 9 10 11 12 13 14 15 16 Port2 (MIDI B/USB2)					

MIDI SONGLIST Save X

System	Channel	Part
Transmit	Port2 Ch1	Off
	Port2 Ch2	Off
	Port2 Ch3	Off
	Port2 Ch4	Off
	Port2 Ch5	Off
	Port2 Ch6	Off
	Port2 Ch7	Off
	Port2 Ch8	Off
Receive		3/4
On Bass Note		▼
Chord Detect		
External Controller	Receive Monitor Port1 (MIDI A/USB1/WLAN) 1 2 3 4 5 6 7 8 9 10 11 12 13 14 15 16 Port2 (MIDI B/USB2)	

MIDI SONGLIST Save X

System	Channel	Note	CC	PC	PB	AT
Transmit	Port2 Ch1	—	—	—	—	—
	Port2 Ch2	—	—	—	—	—
	Port2 Ch3	—	—	—	—	—
	Port2 Ch4	—	—	—	—	—
	Port2 Ch5	—	—	—	—	—
	Port2 Ch6	—	—	—	—	—
	Port2 Ch7	—	—	—	—	—
	Port2 Ch8	—	—	—	—	—
Receive						3/4
On Bass Note						▼
Chord Detect						
External Controller	Receive Monitor Port1 (MIDI A/USB1/WLAN) 1 2 3 4 5 6 7 8 9 10 11 12 13 14 15 16 Port2 (MIDI B/USB2)					

MIDI SONGLIST Save X

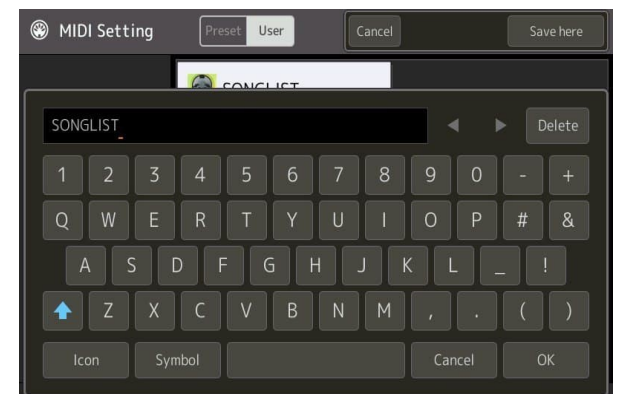
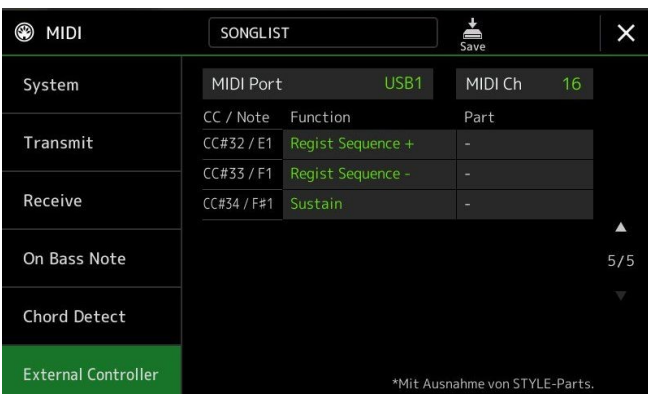
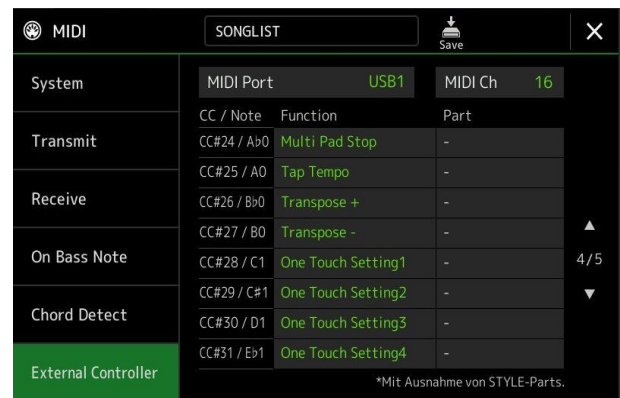
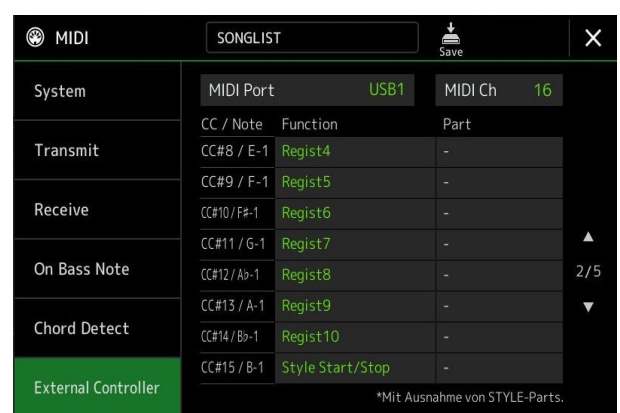
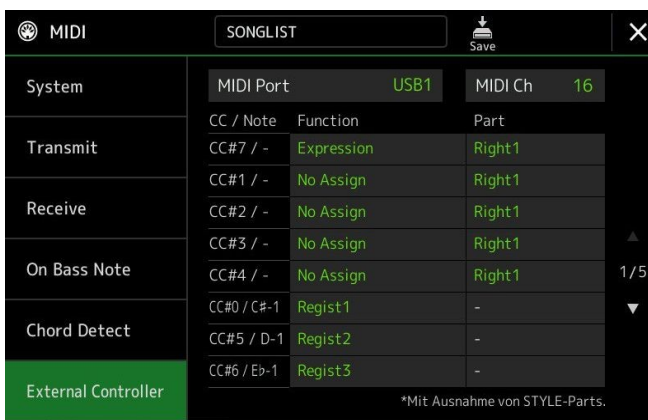
System	Channel	Part
Transmit	Port2 Ch9	Off
	Port2 Ch10	Off
	Port2 Ch11	Off
	Port2 Ch12	Off
	Port2 Ch13	Off
	Port2 Ch14	Off
	Port2 Ch15	Off
	Port2 Ch16	Off
Receive		4/4
On Bass Note		▼
Chord Detect		
External Controller	Receive Monitor Port1 (MIDI A/USB1/WLAN) 1 2 3 4 5 6 7 8 9 10 11 12 13 14 15 16 Port2 (MIDI B/USB2)	

MIDI SONGLIST Save X

System	Channel	Note	CC	PC	PB	AT
Transmit	Port2 Ch9	—	—	—	—	—
	Port2 Ch10	—	—	—	—	—
	Port2 Ch11	—	—	—	—	—
	Port2 Ch12	—	—	—	—	—
	Port2 Ch13	—	—	—	—	—
	Port2 Ch14	—	—	—	—	—
	Port2 Ch15	—	—	—	—	—
	Port2 Ch16	—	—	—	—	—
Receive						4/4
On Bass Note						▼
Chord Detect						
External Controller	Receive Monitor Port1 (MIDI A/USB1/WLAN) 1 2 3 4 5 6 7 8 9 10 11 12 13 14 15 16 Port2 (MIDI B/USB2)					



9.4 MIDI-Setup nur Genos



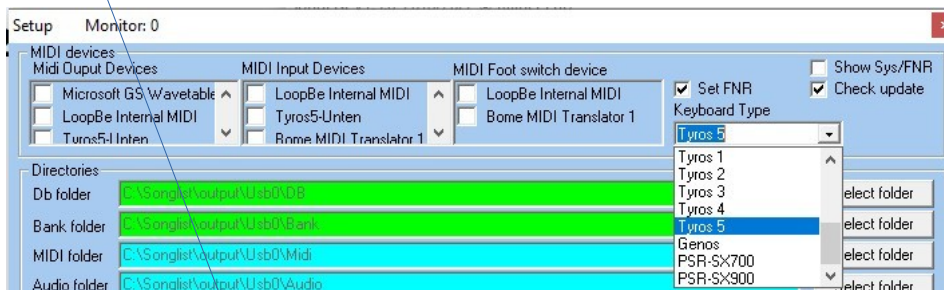
Now save

10. Using an External Footswitch (Behringer FCB-1010)

If you use a foot pedal, connect it only after the basic configuration.
See: FootSwitchEn.Pdf in your installation directory.



In the 3 fields "**Previous**", "**End**" and "**Next**" in the middle of the setup, please enter the MIDI commands that the foot switch sends when the respective button is pressed.



If all 3 input fields contain MIDI commands, the "**MIDI Foot switch device**" window is activated. If you want to use an external foot switch, select the corresponding MIDI device in this window. If you activate the "**Check**" button, a beep will sound when one of the entered commands is received to make it easier to check the configuration. If you want to use keys of the keyboard for turning pages, enter the corresponding commands in the 3 fields without activating a footswitch device.

11. Assigning the Digital Workstation of a MAC

Assigning the Digital Workstation to the Virtualized Windows 7/10 64Bit on a MAC



12. Support and error messages

If you encounter any problems while setting up, please send me an email at kontakt@fritz-tools.de, so we can solve the problem promptly or provide online support via WebEx. Support.

13. MFC Tyros/Genos (External Controller)

Now you have to check the **External Controller** settings in the file **C:\SongList\WorkSt\MFC10\MFC10-External.csv** and adjust them if changes are made.

Please change only the **"Function"** column with the function you selected in the **External Controller** setup. The original file already contains the setting of the MIDI setup screens.

All keyboards

You can enter your own functions according to the given scheme below the following heading. You can find them e.g. in the Data List of your keyboard.

Command	Code	Function (User Commands) ;Do not change this line ;=Separator & =2. command
1	: FF 51 03 B7 1B 00 ;	Tempo This example is a single SysEx command with a function name.
2	: B0 01 00 ;	Reverb 1 This example is a single MIDI command with a function name.
3	: 96 18 7F & 96 18 00 ;	Key C0 Down/Up This example is 2 related MIDI commands like press key and release.

: Separator before the MIDI command

; Separator before the function identifier.

This file is read into SongList and completes the functions of the button **"MFC10"** that are already functions of the button **"MFC10"**.

The following functions are already stored in SongList and do not need to be selected again. be selected again.

INTRO 1, INTRO 2, INTRO 3, INTRO 4, MAIN A, MAIN B, MAIN C, MAIN D, FILL IN AA, FILL IN BB, FILL IN CC, FILL IN DD, BREAK FILL, ENDING 1, ENDING 2, ENDING 3, ENDING 4, Left Part On, R1 Part On, R2 Part On, R3 Part On, R1 Part Off, R2 Part Off, R3 Part Off, Harmony On, Harmony OFF



14. The command file MFC10-External.csv

C:\SongList\WorkSt\MFC10\MFC10-External.csv

MFC10 Code Key Function ;Do not change this line ;, =Separator

Function Do not change this line ":", ";" are the column separators. The following MFC10 section up to the user commands is only supported by Tyros/Genos). The user commands apply to all.

MFC10	Code	Key			
0	:	0D	,	C#-1	; Memory 1
1	:	0E	,	D-1	; Memory 2
2	:	0F	,	Eb-1	; Memory 3
3	:	10	,	E-1	; Memory 4
4	:	11	,	F-1	; Memory 5
5	:	12	,	F#-1	; Memory 6
6	:	13	,	G-1	; Memory 7
7	:	14	,	Ab-1	; Memory 8
8	:	15	,	A-1	; Memory 9
9	:	16	,	Bb-1	; Memory 10
10	:	17	,	B-1	; Style Start / Stop
11	:	18	,	C0	; Synchro Stop
12	:	19	,	C#0	; Fill Self
13	:	1A	,	D0	; Fill Down
14	:	1B	,	Eb0	; Fill Up
15	:	1C	,	E0	; M-Pad 1
16	:	1D	,	F0	; M-Pad 2
17	:	1E	,	F#0	; M-Pad 3
18	:	1F	,	G0	; M-Pad 4
19	:	20	,	Ab0	; M-Pad Stop
20	:	21	,	A0	; Tap Tempo
21	:	22	,	Bb0	; Transpose +
22	:	23	,	B0	; Transpose -
23	:	24	,	C1	; OTS 1
24	:	25	,	C#1	; OTS 2
25	:	26	,	D1	; OTS 3
26	:	27	,	Eb1	; OTS 4
27	:	28	,	E1	; REGIST SEQ. +
28	:	29	,	F1	; REGIST SEQ. -
29	:	2A	,	F#1	; Sustain

Command	Code	;	Function (User Commands)	;Do not change this line	:=Separator & =Double command
1	: FF 51 03 B7 1B 00	;	Tempo		
2	: F0 43 73 01 50 08 00 00 7F F7	;	Voice R1 On		
3	:F0 43 73 01 50 08 00 00 00 F7	;	Voice R1 Off		
4	: F0 43 73 01 50 08 01 00 7F F7	;	Voice R2 On		
5	: F0 43 73 01 50 08 01 00 00 F7	;	Voice R2 Off		
6	: F0 43 73 01 50 08 02 00 7F F7	;	Voice R3 On		
7	: F0 43 73 01 50 08 02 00 00 F7	;	Voice R3 Off		
8	: F0 43 73 01 50 08 03 00 7F F7	;	Voice Left On		
9	: F0 43 73 01 50 08 03 00 00 F7	;	Voice Left Off		
10	:B0 01 00	;	Hall 1		
11	:96 18 7F & 96 18 00	;	Taste C0 Down/Up		

Extend the lines with your commands and add any new lines.

Please pay attention to the required structure!

Important USER flash directories of the Genos.

These USER flash directories must not be deleted under any circumstances as they are required for the Geno to function.

MULTI PAD	02.01.2017 13:06	Dateiordner
PLAYLIST	02.01.2017 13:06	Dateiordner
REGIST	30.12.2017 07:44	Dateiordner
SONG	28.12.2017 16:39	Dateiordner
STYLE	24.12.2017 18:28	Dateiordner
SYSTEM	02.01.2017 13:06	Dateiordner
TEXT	02.01.2017 13:06	Dateiordner
VOICE	25.12.2017 07:14	Dateiordner